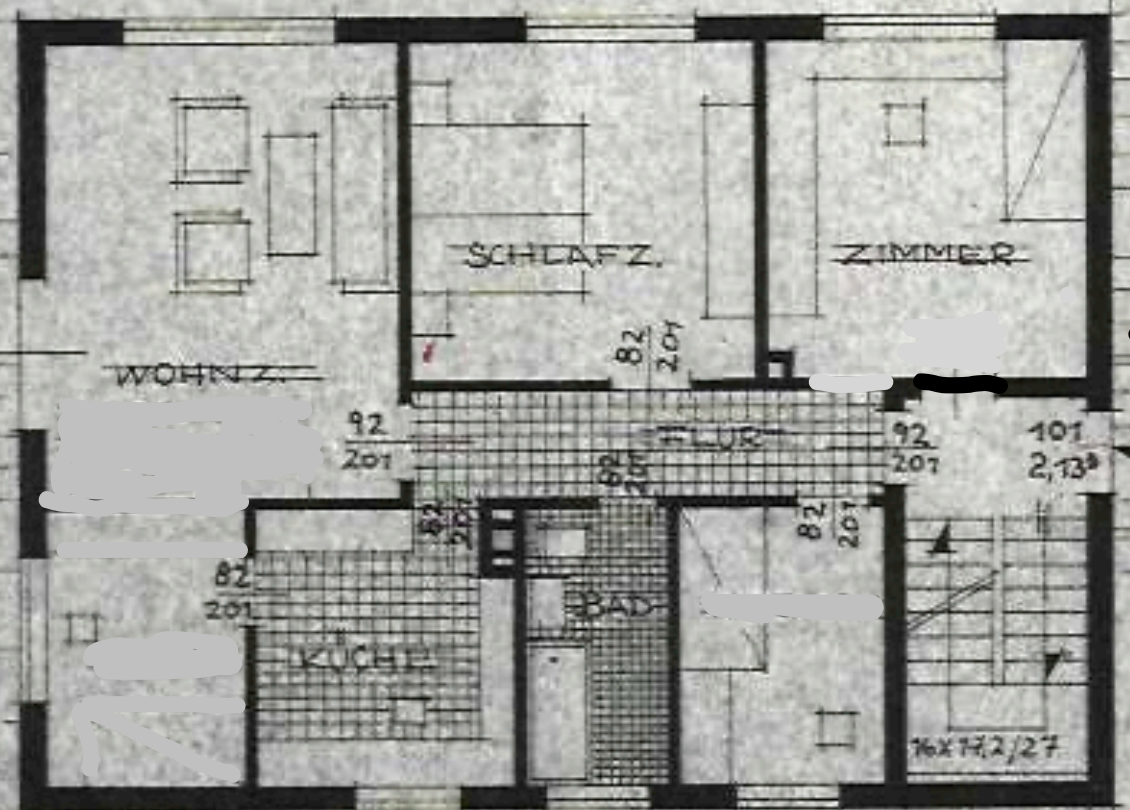
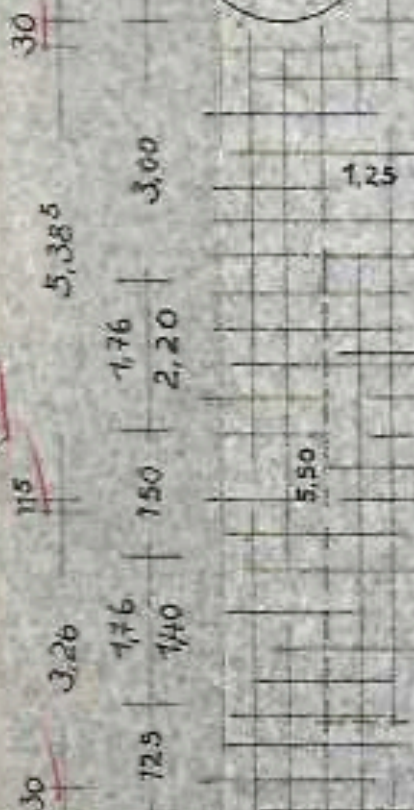


30	4,735	115	4,01	115	3,76	30
1,25	2,57 1,60	2,25	2,01 1,40	1,50	2,01 1,40	1,25
12,735						



30	4,00	115	1,26 1,40	1,00	1,26 1,40	1,00	1,26 1,40	3,25	30
2,385		115	3,01	115	1,635	115	2,385	2,135	30
12,735									

